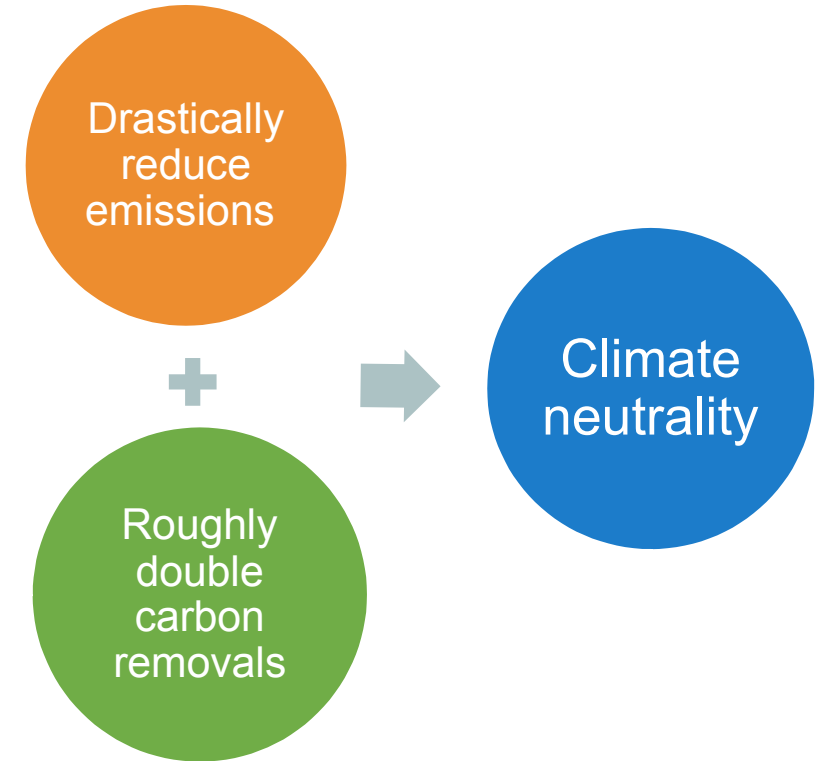
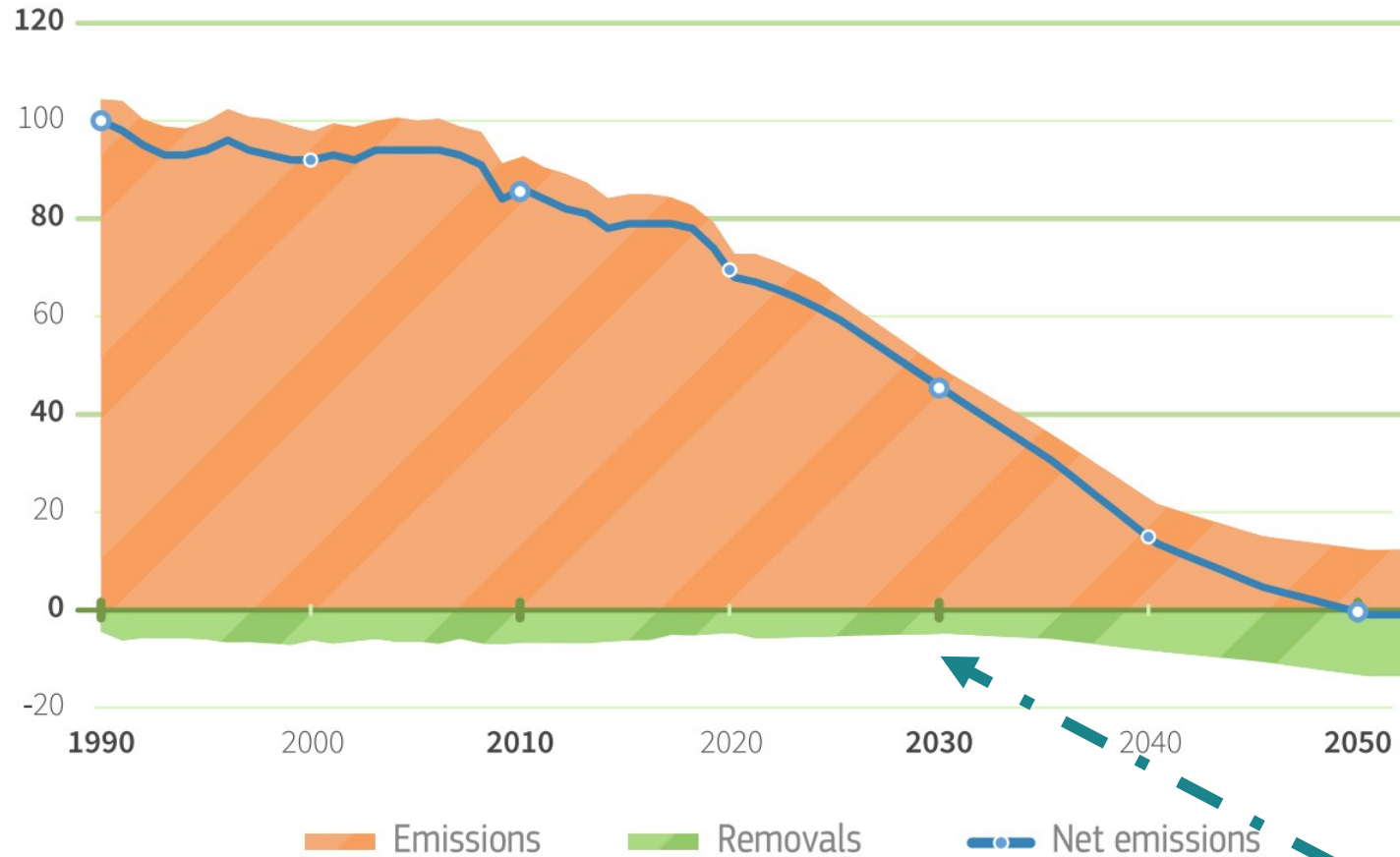




# LULUCF and Carbon Removals

*12 June 2023*

# Towards climate neutrality



**EU LULUCF target of -310 Mt removals in 2030**

# Sustainable Carbon Cycles

**More sustainable  
production of  
food and  
biomass**

**More sustainable  
use of food and  
biomass**

# Starting up carbon farming

## Benefits



Increased carbon removals



Additional income for land managers

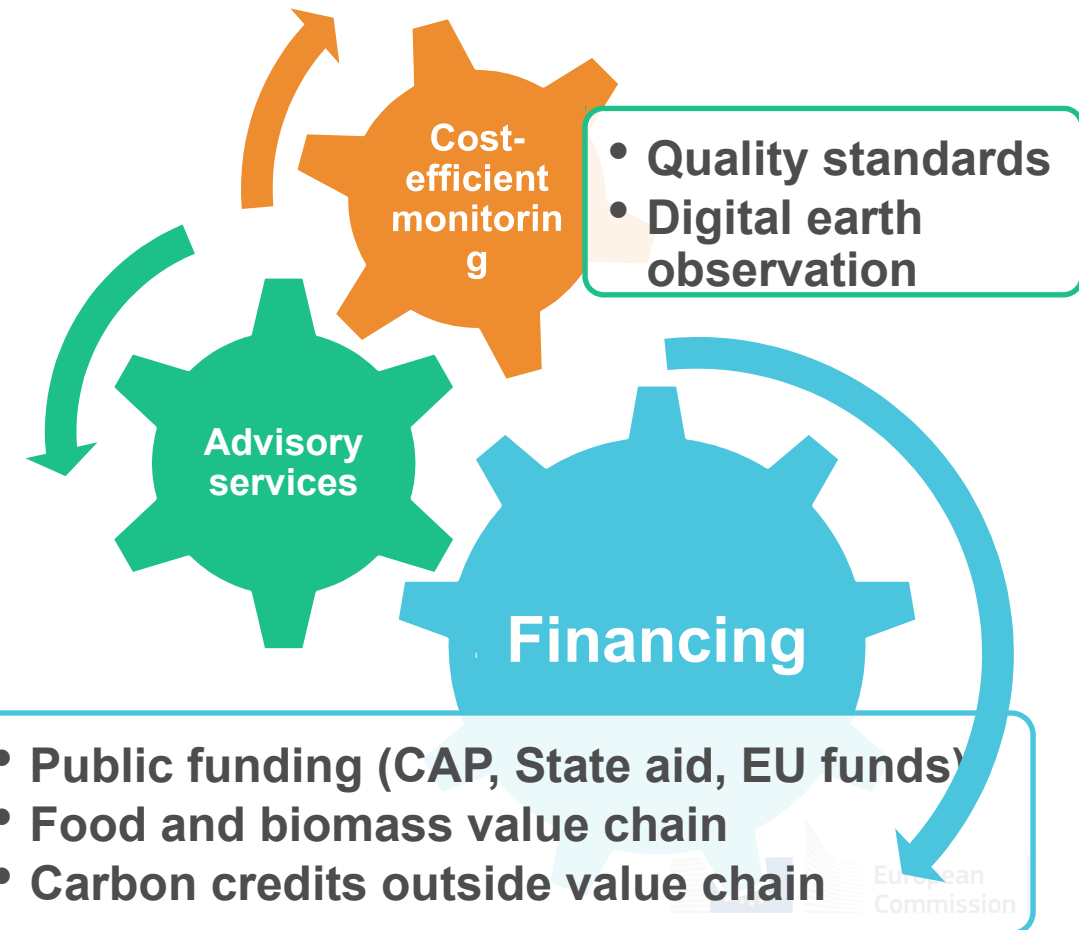


More biodiversity and nature



Increased climate resilience of farm and forest land

## Challenges



# Starting up industrial carbon removals

## Permanent storage



**Bioenergy with carbon capture and storage** e.g. Stockholm Exergi's project financed by Innovation Fund



**Direct air capture and storage**

## Storage in long-lasting products



Use of long-lasting **wood-based construction products** and **other carbon-storing building materials**

Challenges

First-of-a-kind projects

Sustainable sourcing of feedstock and energy

Public-private financing

# LULUCF and bioeconomy policies

## Achieving a LULUCF sink of 310 Mt in 2030

- **National Energy and Climate Plans**
  - Drafts to be submitted by *30 June 2023*
  - Study on possible [policy measures](#)
- **Update of CAP Strategic Plans**
  - To reflect higher ambition in LULUCF and ESR
  - At latest by *November 2023*
- **Further public and private financing**
  - State aid for carbon farming
  - Voluntary carbon markets
  - EU Carbon Removal Certification

## Milestones for post-2030 EU bio-economy policy

- **2040 target - review of the Climate Law**
  - Public [consultation](#)
- **Industrial carbon management**
  - Public [consultation](#)
- **LULUCF review – new Article 17**
  - Carbon farming and carbon storage products
- **Article 30 new EU ETS Directive**
  - Commission to report in 2026 to assess the inclusion of permanent removals in EU ETS

# Framework for the voluntary certification of carbon removals in the EU

## Principles in the framework

### QU.A.L.I.TY criteria

- **QU**antification
- **A**dditionality
- **L**ong-term storage
- **S**ustainabil-**ITY**

### Credible certification

- **Third-party** verification
- **Reliable** certification schemes
- **Public** registries



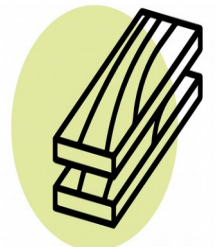
**Tailored certification methodologies** – to be developed together with expert group



PERMANENT STORAGE



CARBON FARMING



CARBON STORAGE IN LONG-LASTING PRODUCTS



# Expert group meeting on Carbon farming 21 and 22 June

Overview of existing certification methodologies in Europe

- *Soils*
- *Forestry*
- *Peatlands*

Based on more than 140 submissions to a call for inputs



# Where can I find more information on carbon removal certification? 1/2

- Proposal: [https://climate.ec.europa.eu/document/fad4a049-ff98-476f-b626-b46c6afdded3\\_en](https://climate.ec.europa.eu/document/fad4a049-ff98-476f-b626-b46c6afdded3_en)
- Impact Assessment: [https://climate.ec.europa.eu/document/ab53e63b-4b85-4d28-ac67-6bd742506bae\\_en](https://climate.ec.europa.eu/document/ab53e63b-4b85-4d28-ac67-6bd742506bae_en)
- Press release: [Commission proposes certification of carbon removals \(europa.eu\)](https://ec.europa.eu/commission/presscorner/detail/en/pr_22_7159)
- Q&A: [https://ec.europa.eu/commission/presscorner/detail/en/qanda\\_22\\_7159](https://ec.europa.eu/commission/presscorner/detail/en/qanda_22_7159)
- Factsheet: [https://ec.europa.eu/commission/presscorner/detail/en/fs\\_22\\_7161](https://ec.europa.eu/commission/presscorner/detail/en/fs_22_7161)
- [Expert group on carbon removals \(europa.eu\)](https://ec.europa.eu/commission/presscorner/detail/en/fs_22_7161)

# Where can I find more information on carbon removal certification? 2/2

- More information on Sustainable Carbon Cycles: [https://ec.europa.eu/clima/eu-action/forests-and-agriculture/sustainable-carbon-cycles\\_en](https://ec.europa.eu/clima/eu-action/forests-and-agriculture/sustainable-carbon-cycles_en)
- Corporate Sustainability Reporting Directive: [EUR-Lex - 32022L2464 - EN - EUR-Lex \(europa.eu\)](#)
- Draft European Sustainability Reporting Standards – Climate Change: [Download \(efrag.org\)](#)
- New State Aid Guidelines for Agriculture and Forestry: [State aid \(europa.eu\)](#)
- [Innovation Fund \(europa.eu\)](#)
- LIFE programme: [Climate change mitigation and adaptation \(europa.eu\)](#)
- [Soil Mission \(europa.eu\)](#)