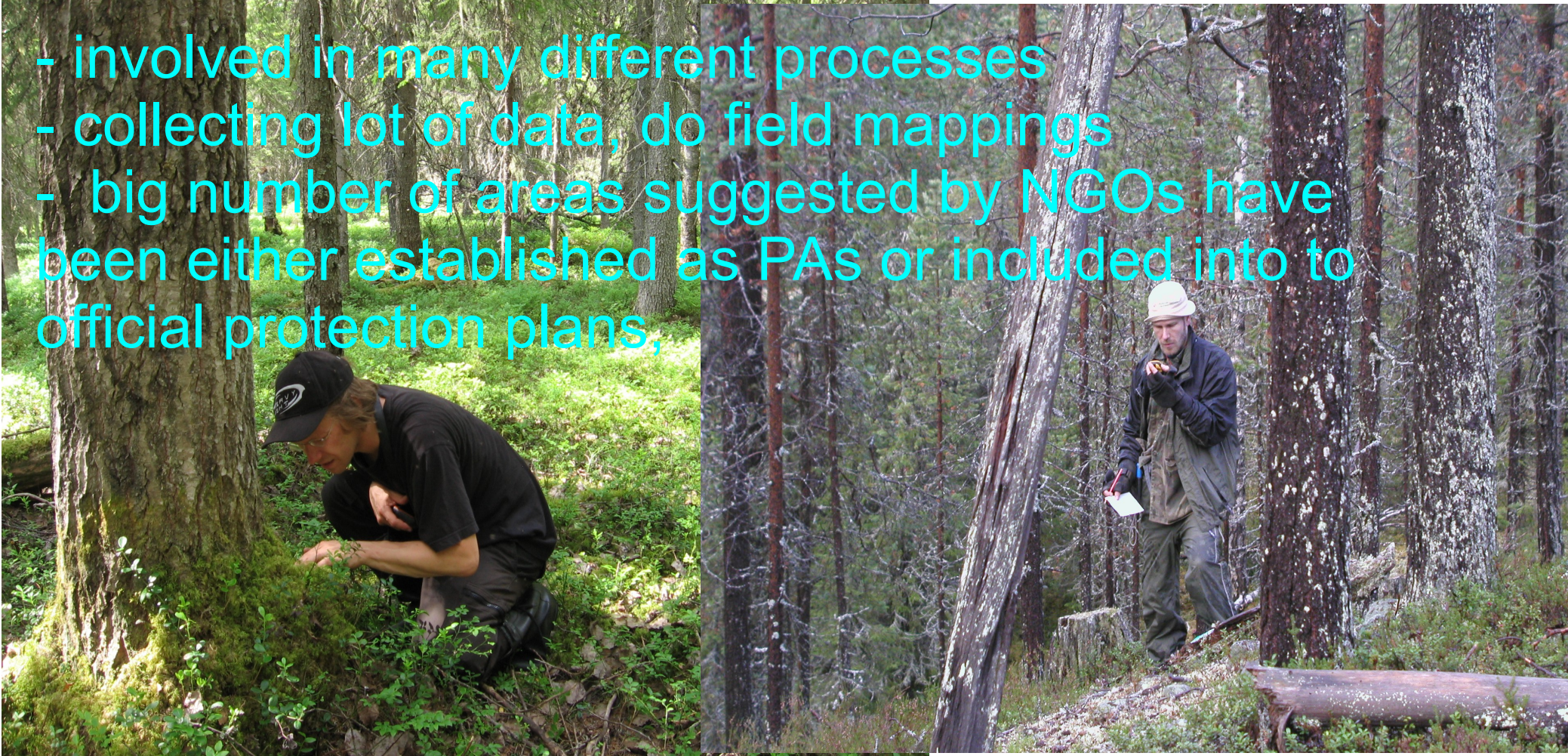


Strengthening the Greenbelt of Fennoscandia: Current proposals for protected areas by Finnish NGOs

R. Mustonen
Finnish Association for Nature Conservation
K.Savola
J.Mikkola
Petrozavodsk 10.10.2013


NGOs important role in building GBoF since early 90's

- involved in many different processes
- collecting lot of data, do field mappings
- big number of areas suggested by NGOs have been either established as PAs or included into official protection plans,



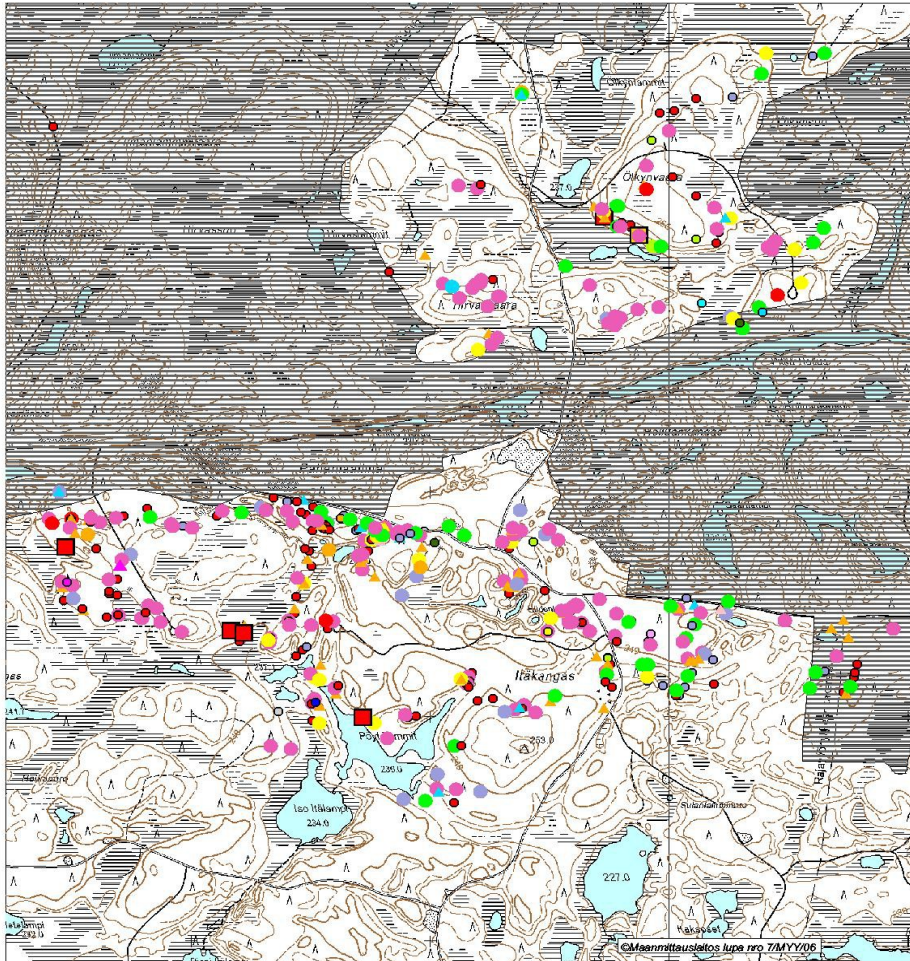
1. Hossa hiking area and surrounding forests



- 
- A photograph of a forest with a large, weathered log in the foreground and many trees in the background. The log is light-colored and shows signs of decay, with several holes and a large opening. The forest floor is covered with moss and small plants. The trees in the background are tall and thin, with green foliage.
- Part of the hiking area strictly protected in Natura 2000, some parts in forestry use
 - 2011 Metsähallitus planned large loggings in area → local people, eco-turism entrepreneurs and NGOs raised issue to public
 - Natura habitat type estimation → fulfilling the Natura 2000 requirements for the natural boreal forest habitat type
 - loggings have been cancelled for now

Pahamaailma – exquisite unprotected pine forest





- | | | |
|------------------------------------|-------------------------------------|---------------------------------|
| ● Havainnot, jäisi GPS-piste | ● <i>Gloeophyllum abietinum</i> | ● <i>Postia latentia</i> |
| ● <i>Amylocystis lapponica</i> | ● <i>Gloeophyllum protractum</i> | ● <i>Postia placenta</i> |
| ● <i>Anomoporia bombycina</i> | ● <i>Haploporus aurantiacus</i> | ● <i>Postia septentrionalis</i> |
| ● <i>Antrodia albobrunnea</i> | ● <i>Odontium romellii</i> | ● <i>Protomerulius caryae</i> |
| ■ <i>Antrodia crassa</i> | ● <i>Parmastomyces mollissimus</i> | ■ <i>Skeletocutis jelskii</i> |
| ● <i>Antrodia infirma</i> | ● <i>Phelellus ferrugineofuscus</i> | ● <i>Skeletocutis lenis</i> |
| ● <i>Antrodia infirma/primaeva</i> | ■ <i>Phelellodon secretus</i> | ● <i>Skeletocutis odora</i> |
| ● <i>Antrodia primaeva</i> | ▲ <i>Phlebia centrifuga</i> | ● <i>Skeletocutis stellae</i> |
| ▲ <i>Phlebia comea</i> | ▲ <i>Phlebia serialis</i> | ▲ <i>Stereopsis vitellina</i> |
| ▲ <i>Fibrillum lapponicum</i> | ● <i>Postia habernica</i> | ○ <i>Trichaptum laricinum</i> |
| ● <i>Fomitopsis rosea</i> | | |
| ● <i>Gelatoporia pannocincta</i> | | |

Polypores of pine

1278 findings of 35 different IUCN red listed species

22 EN findings (of 3 species)

628 VU+EN -findings (of 14 species)

650 NT- findings, (21 species)

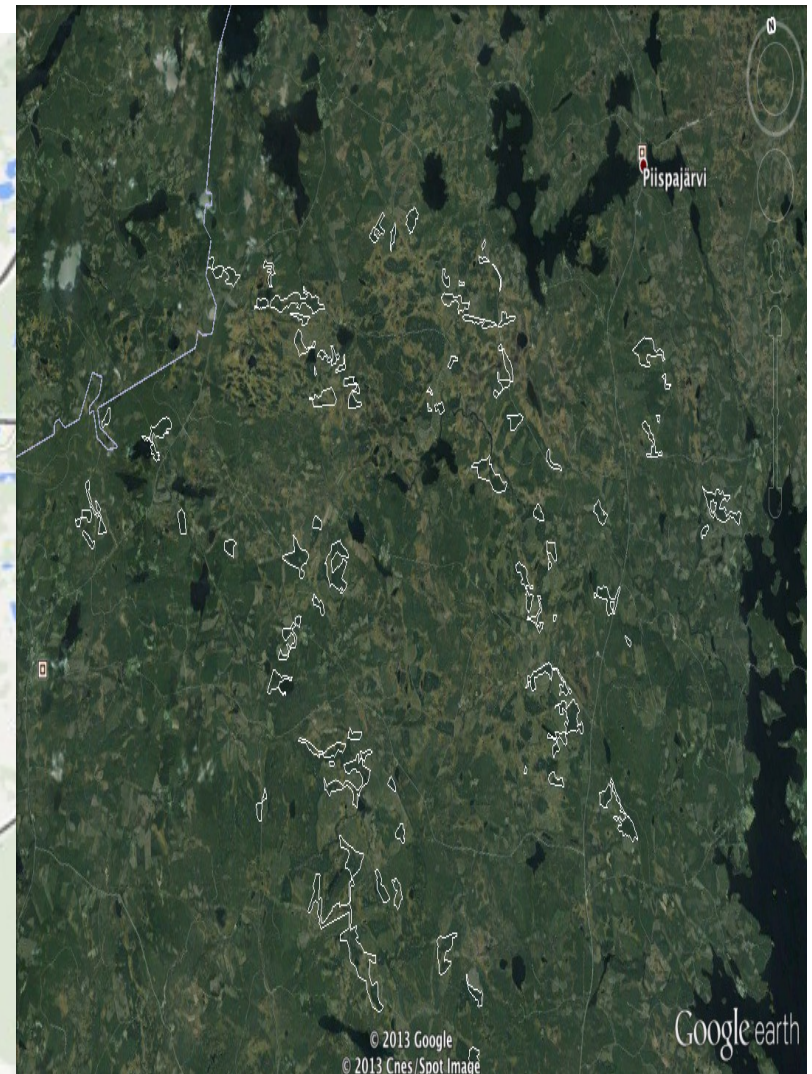
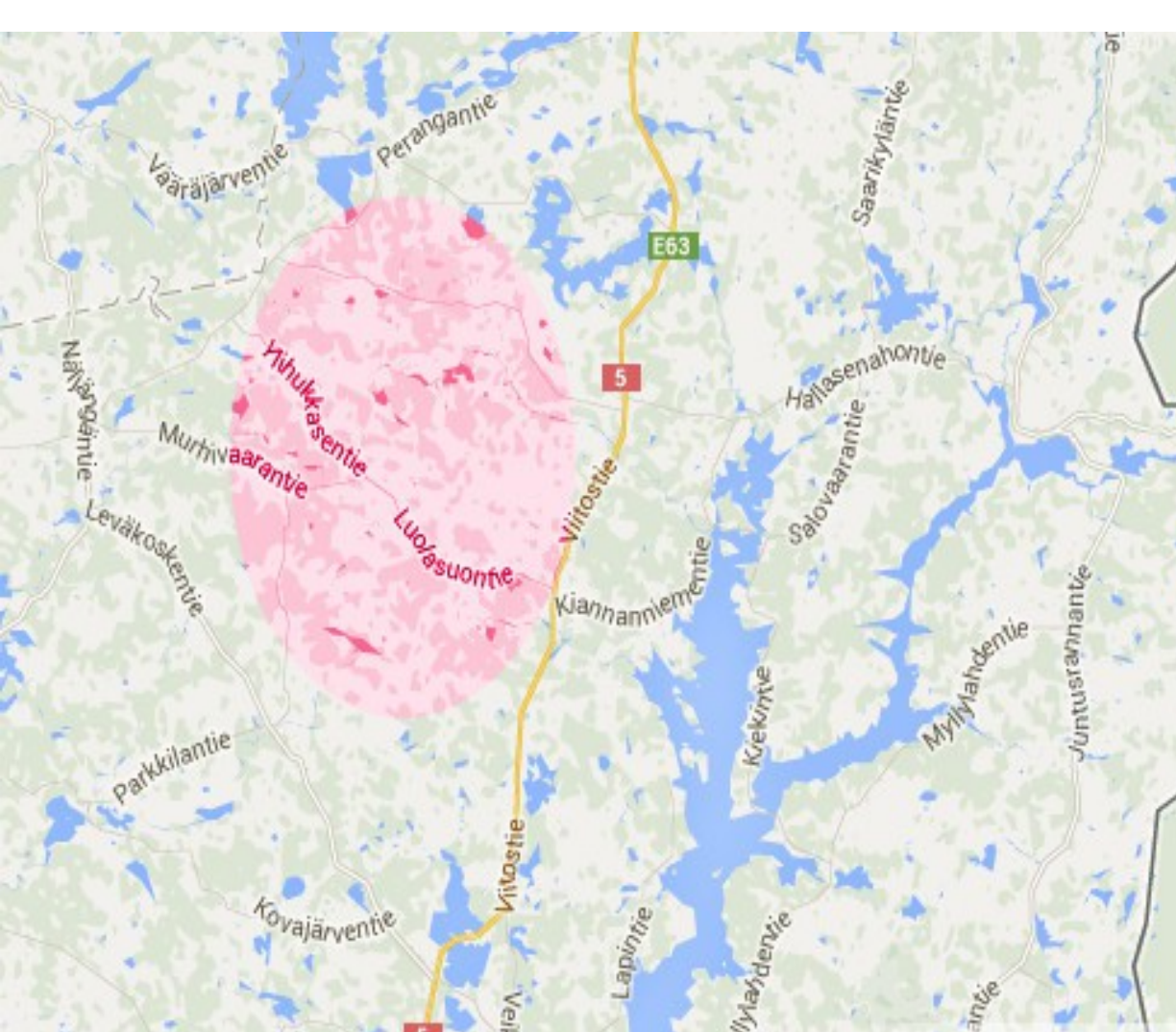
Hossa – Pahamaailma area must be protected as part of GBoF. Loggings should not be allowed anymore.



Flying squirrel under siege by clear cuttings in northern Suomussalmi (Näljänkä)



Northest flying squirrel population in Kainuu area





Suomen  luonnonsuojeluliitto



Suomen  luonnonsuojeluliitto



ETI
P:
I:

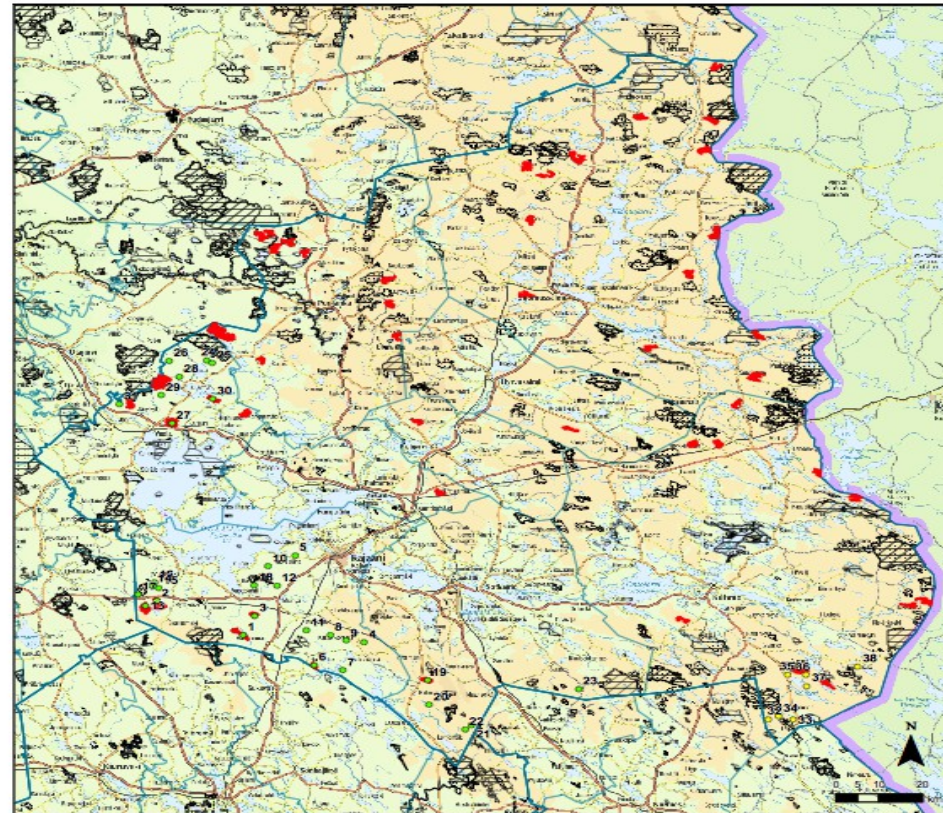
“[A] significant amount of logging has taken place in the known habitats of flying squirrel in the area of Näljänkä, where this planned logging site is located. Some of the areas have been logged to an extent where even whole habitats might have been destroyed ...”

– The Centre for Economic Development, Transport and the Environment of Kainuu, 28 January 2013, in a statement on Metsähallitus’ logging plans in Kolkonjoki forest area.



Proposal areas to the complementary protection program of mires in Kainuu and Suomenselkä

Kainuun suoelvytyksen kesän 2010 suuret suokohteet ja Kaijo Savolan Kainuussa tutkimat suot



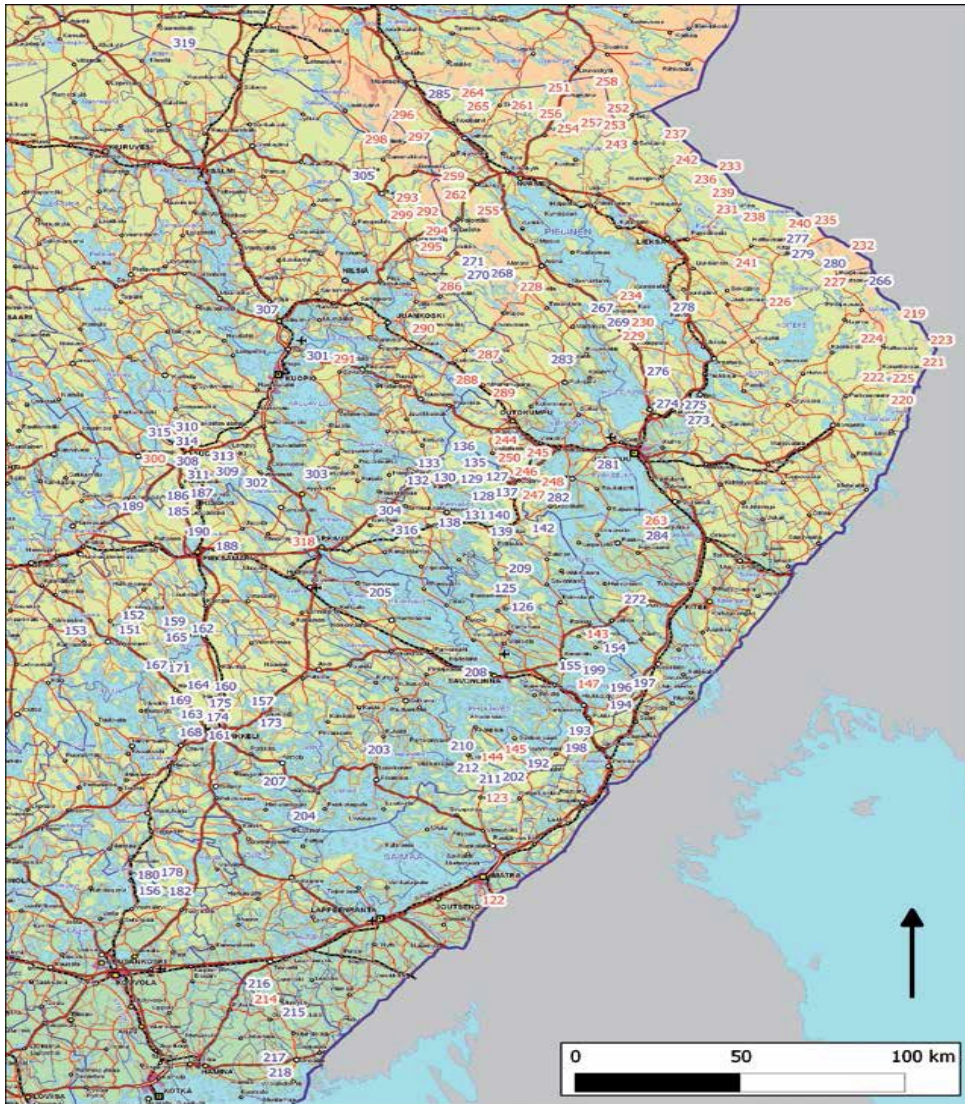
- Savolan vanhat suoelvytyksenä. Numeroinni sama kuin erillisessä taustakartassa.
- Savolan johdolla 2010 toteutetut suot. Numeroinni sama kuin erillisessä taustakartassa.
- Suuret suoikohteet Kainuun suoelvytyksessä (ajattaman pintaa-ala on vähintään 150 ha sekä Paltamon ja Rautjärven suurimmat ojittamattomat suot)
- Luonnonsuojelualue (säätie 30.6.2010)
- Natura 2000 -ohjelman kuuluvuus alue
- Sodankylä, varhojen metsien, lahojen- ja kirkonluonnonsuojeluohjelman kuuluvuus alue

Valokuvat: Savolainen / Arto, Paltamon / SGL 13.2010
Maastokartat: © Arto, Paltamon / SGL 13.2010
Luonnonsuojelualueet: © SGL, Kainuun ympäristökeskus, ES-Perustelut



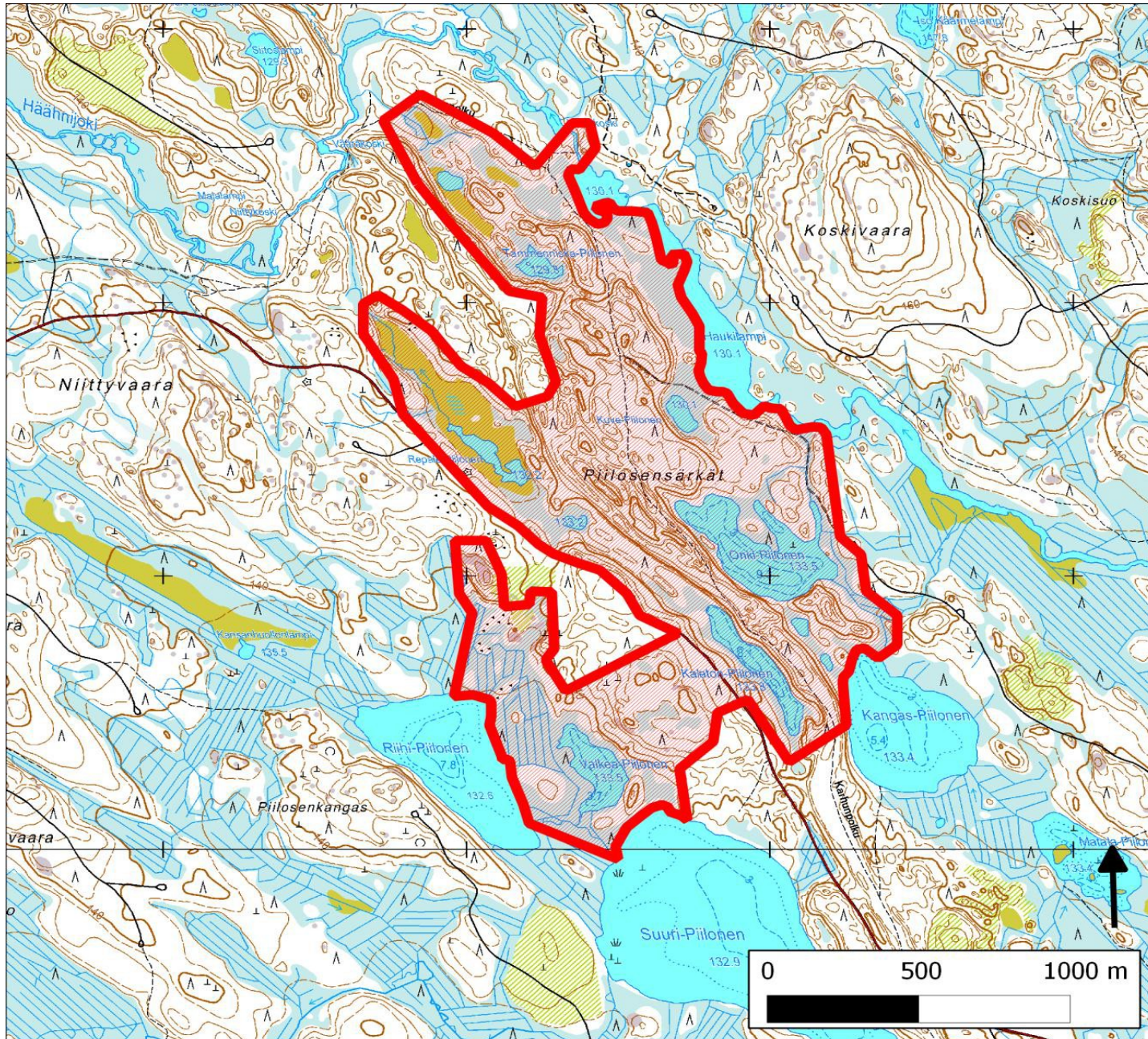
Vipuvoimaa
EU:lla

State owned forests in North-Carelia



- Includes also many valuable mires and small waters just near the border
- Criteria for protection should not be too strict in Southern Finland
- Also restoration needed in degraded habitats

236. Piilosensärkät, Lieksa



236. Piilosensärkät (Lieksa)





Conclusions:

- Loggings should be stopped immediately in all remaining old growth forests in state lands
- Hossa – Pahamaailma unique old forests should be strictly protected from loggings.
- The state land areas proposed for protected areas in METSO-program should be established in Kainuu and North-Carelia.

Thank You!
Sposibo!
Kiitos!

Kuva:HannuFriman

Suomen  luonnonsuojeluliitto