

DEVELOPING THE FENNOSCANDIAN GREEN BELT IN SOUTH-EAST FINLAND

Vuori K.-M.², Hamari R.³, Juuti J.², Miikkulainen A.², Mustonen R.¹, Sahi V.¹, Simola H.⁴, Sulkava R.¹

¹Finnish Association for Nature Conservation (FANC), ²FANC South Karelia
³FANC Kymenlaakso, ⁴FANC North Karelia

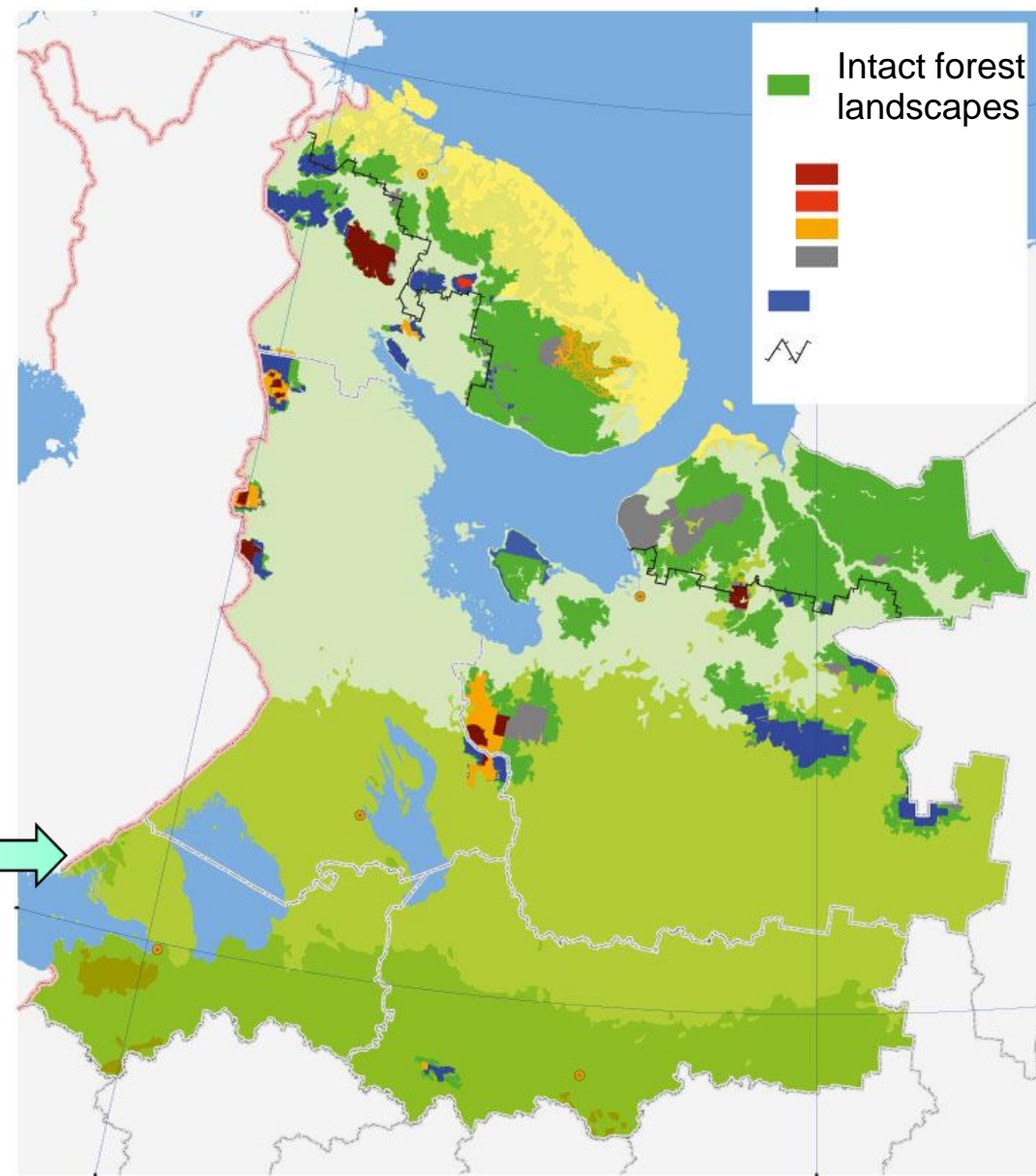
Image Landsat
Data SIO, NOAA, U.S. Navy, NGA, GEBCO

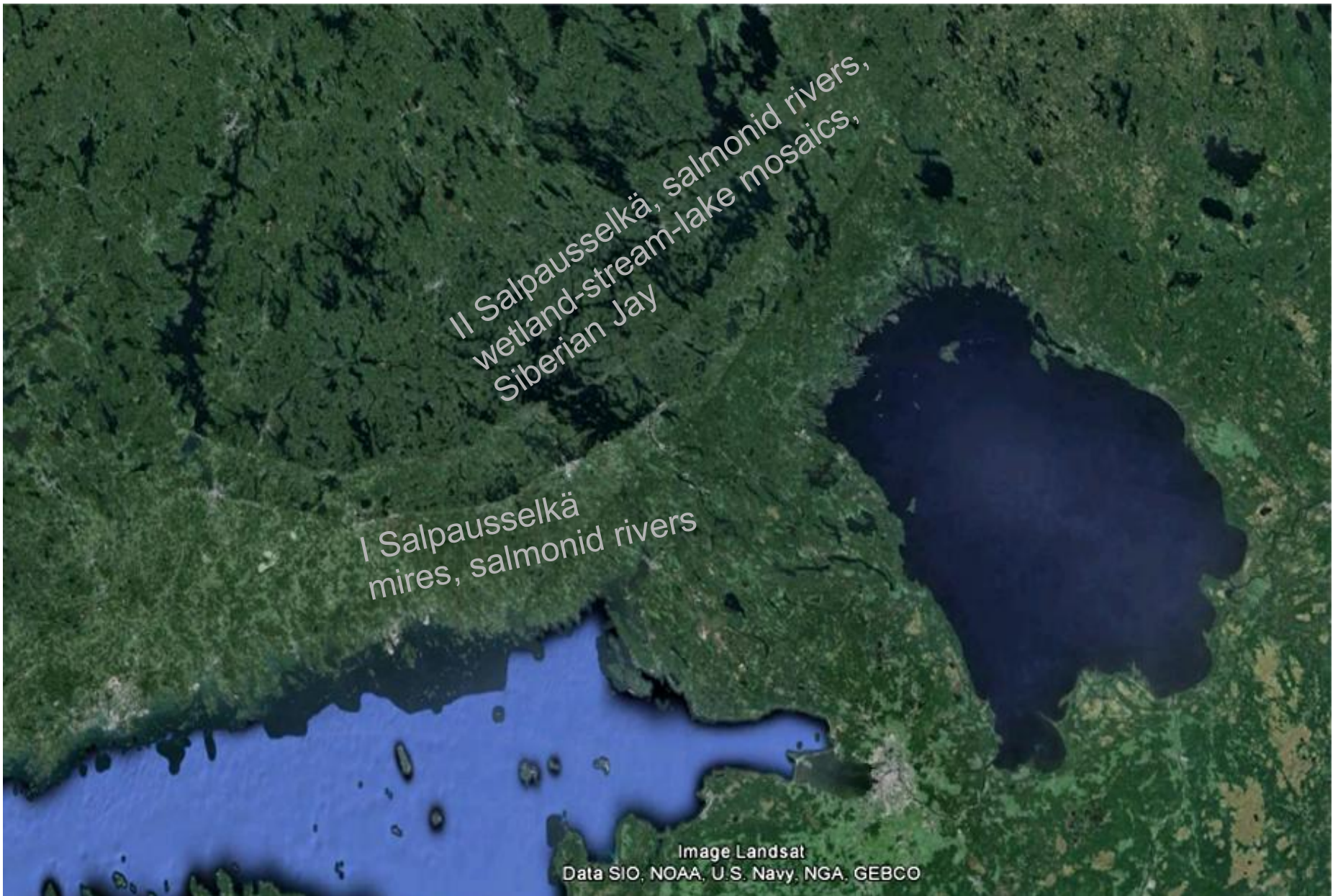
Why GB in South-East Finland?

- South-East Finland = GAP of biodiversity and habitat protection
 - Protected forest lands 0.35%, extensive forestry & centre of paper and pulp mill industry, peatland drainage 60-85% -*loss of diversity*
 - GAP-analysis in NW Russia (Karelian Isthmus & Ladoga Karelia): lack of existing protected areas but *several planned + wide areas of intact forest tracts & landscapes, salmon spawning rivers*
- Conservation values exist!
 - Unique *Forest-Wetland-Stream-Lake mosaics* retain biodiversity values and potential for restoration; urgent need for *ecological corridors* utilizing river channel networks
 - Taiga protection activities by NGOs

SE-Finland conservation values connected to the conservation needs in the Russian side:

“The second priority is to protect intact forest landscapes in the southern boreal forest sub-zone which are characterized by highly productive forest types maintaining especially high biodiversity.”





II Salpausselkä, salmonid rivers,
wetland-stream-lake mosaics,
Siberian Jay

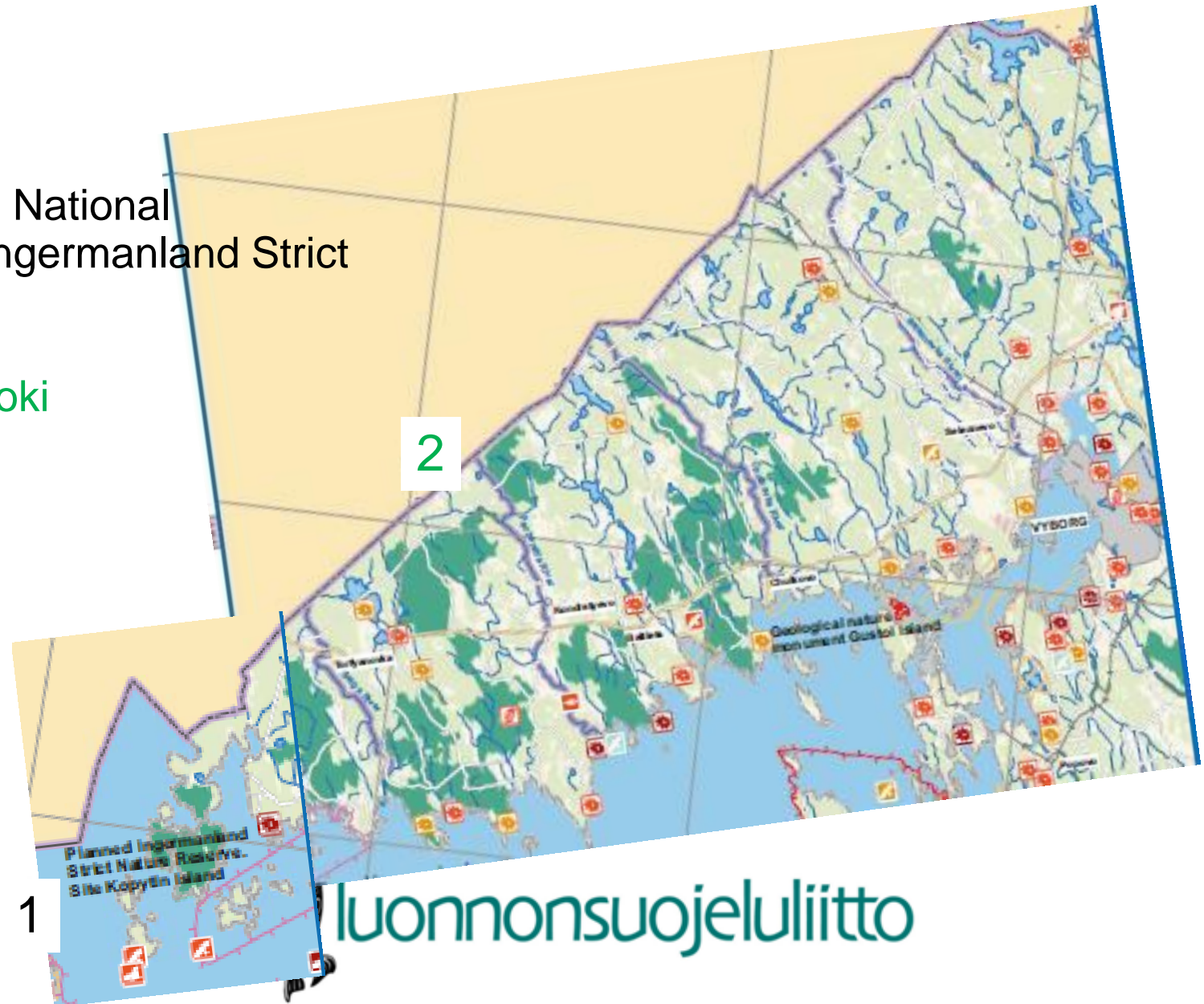
I Salpausselkä
mires, salmonid rivers

Image Landsat
Data SIO, NOAA, U.S. Navy, NGA, GEBCO

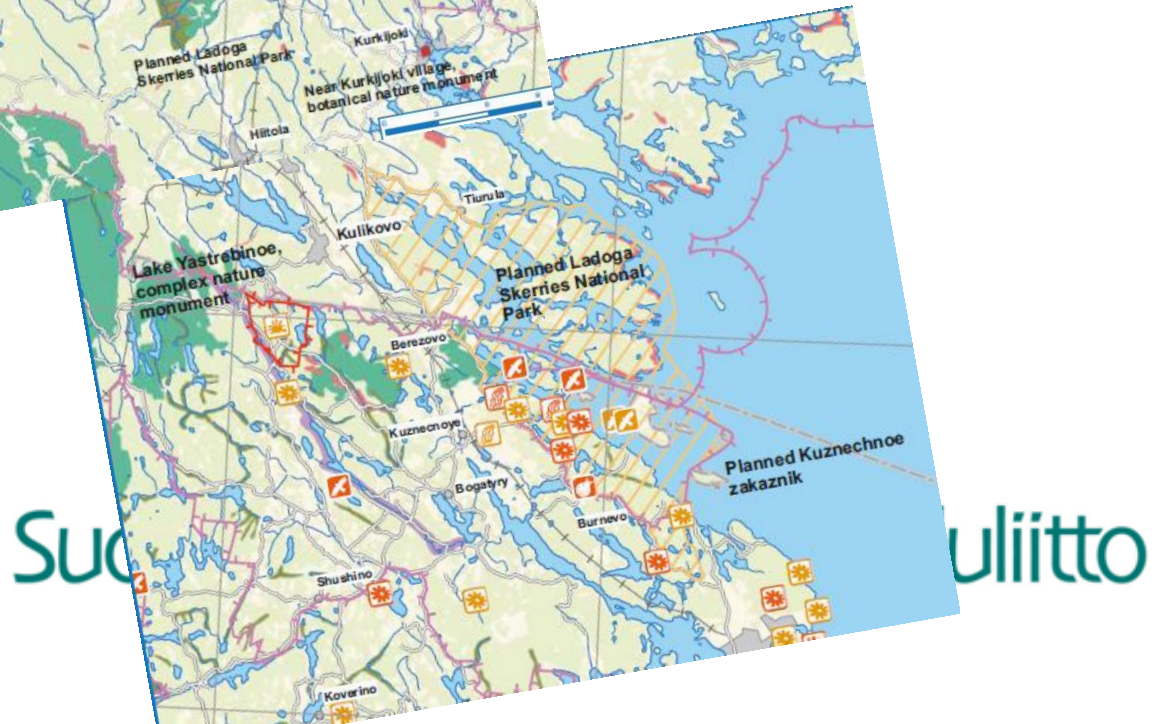
GB SE-Finland with counterparts in GAP of NW-Russia (Kobyakov & Jakovlev 2013), examples

1: Gulf of Finland National Park ><planned Ingermanland Strict Nature Reserve,

2: River Urpalanjoki

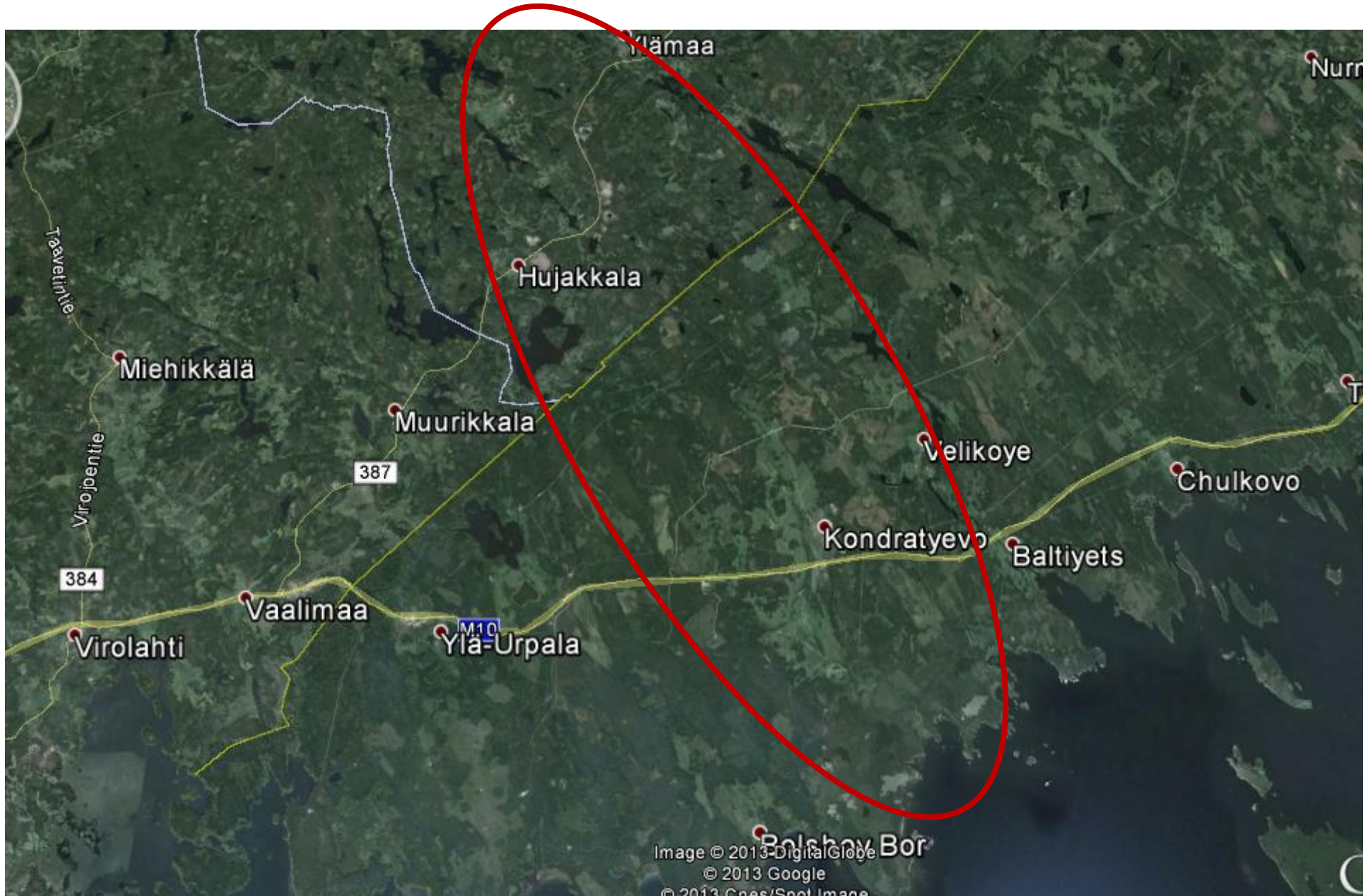


3: River Hiitolanjoki,
4: Ladogian Karelia zone-
Karelian Pyhäjärvi



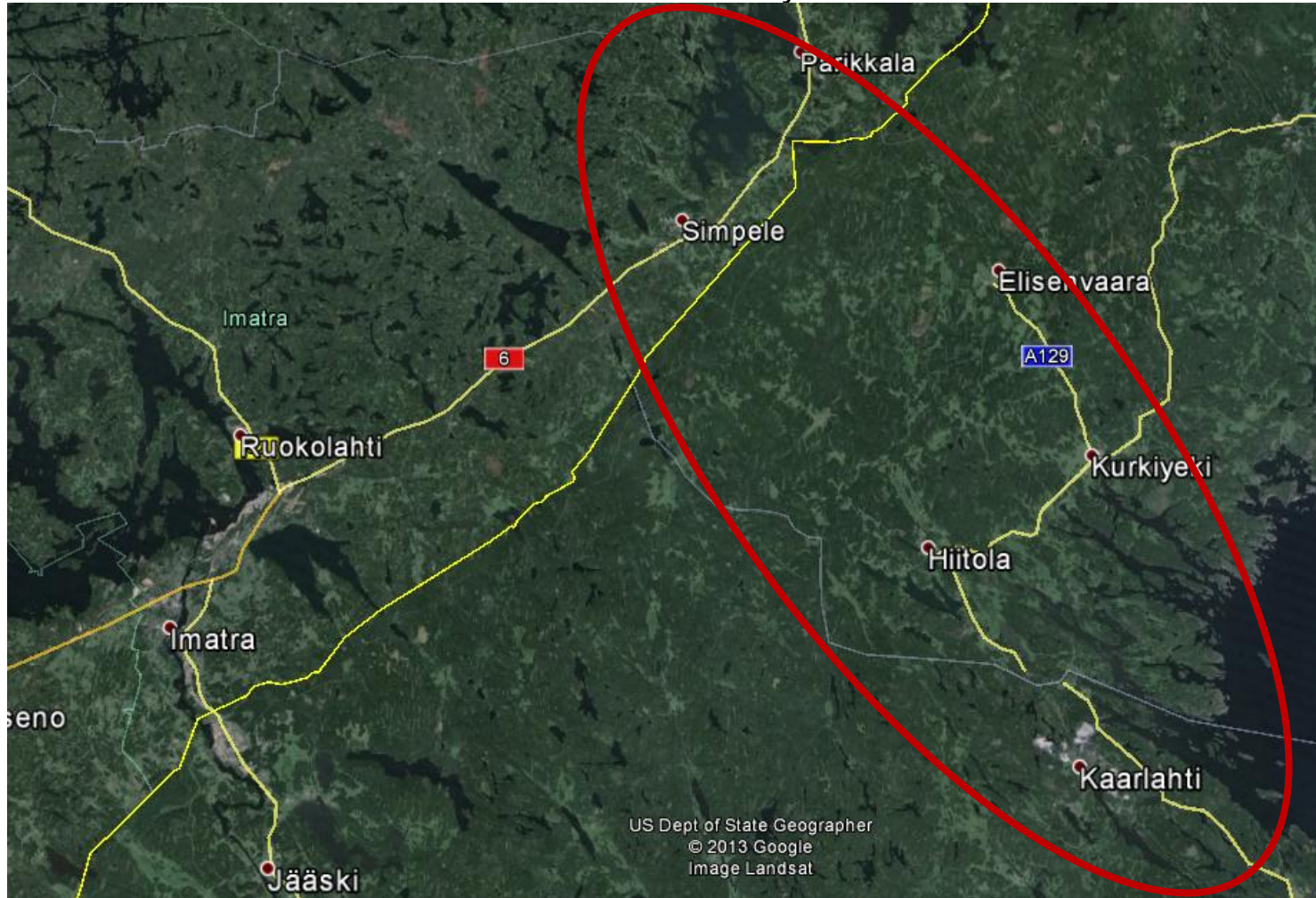
2. River Urpalanjoki

Finland: extensive restoration activities (sea trout, stream habitat), connectivity to the mire area of the southern I Salpausselkä area, **Russia:** salmonid spawning, intact forest tracts/landscapes, also mires?



3. River Hiitolanjoki

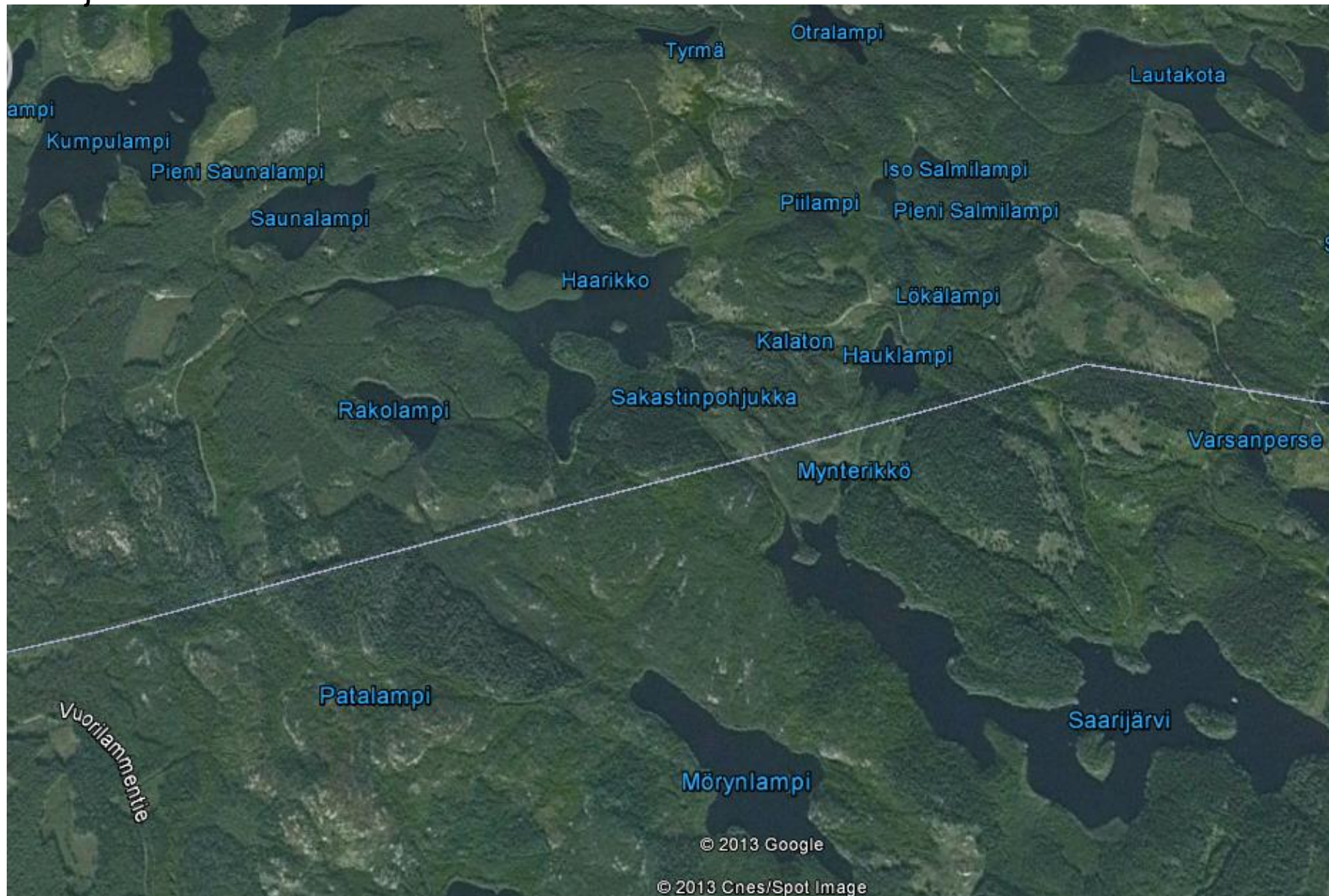
Finland: restoration activities pending (Lake Ladoga salmon), connectivity to the mosaics of old-growth forests (Haarikko-Saarijärvi, Lohikoski State Forestarea)-, streams and lakes, **Russia:** connectivity to the planned Ladoga skerries National Park + salmonid spawning and intact forest regions and planned zakaznik Karelsky Forest



3: River Hiitolanjoki,
4: Ladogian Karelia zone-
Karelian Pyhäjärvi

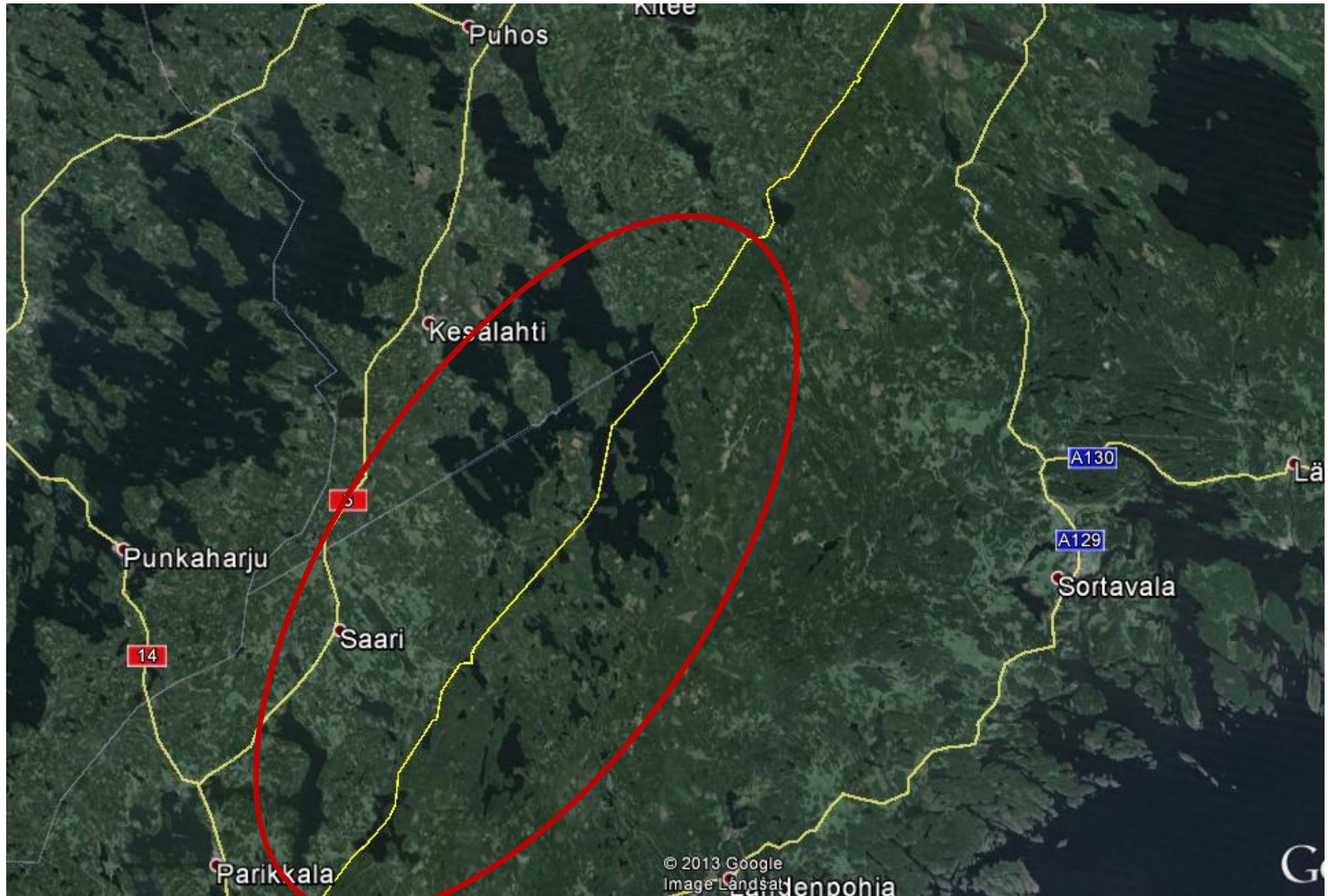


Forest-wetland-stream-lake –MOSAIC in the Haarikko-Saarijärvi region, northernmost part of the Hiitolanjoki river basin

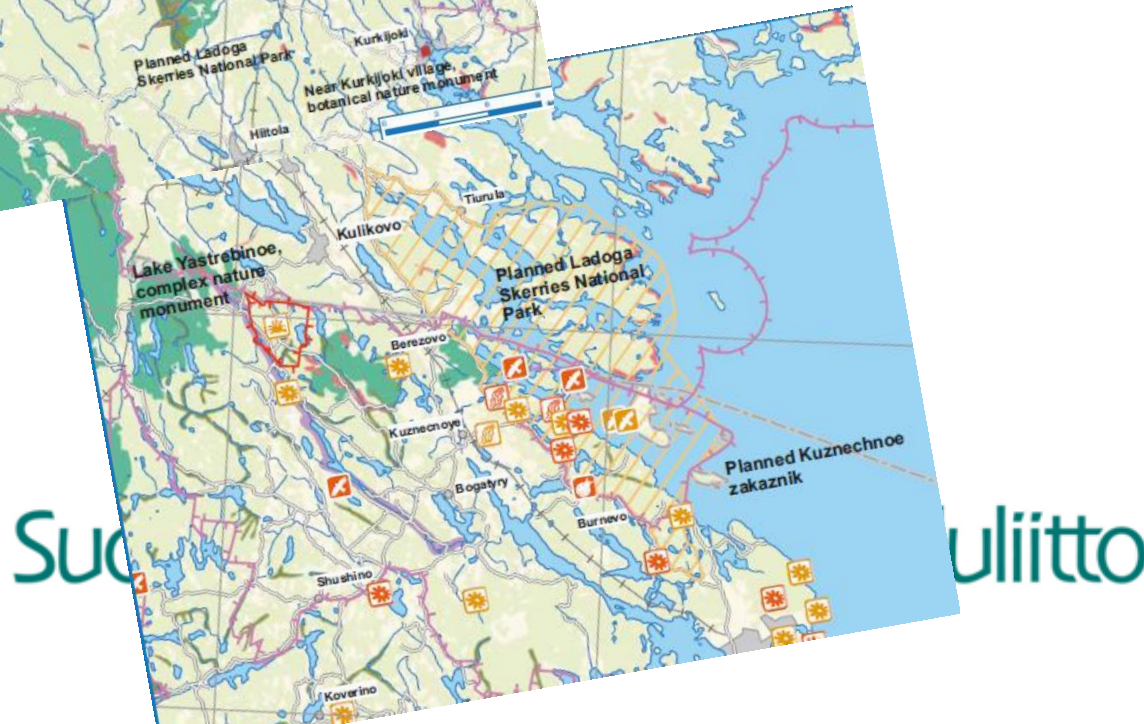


4. Ladogian Karelia zone and Pyhäjärvi region

Finland: lush deciduous forest zone, Siikalahti nature reserve, border lakes
Russia: connectivity to the planned Iso Iijärvi complex landscape zakaznik, Hiitolanjoki river area & planned Ladogan skerries NP



3: River Hiitolanjoki,
4: Ladogian Karelia zone-
Karelian Pyhäjärvi



Actions: developing GB in SE-Finland

- Conservation: voluntary/METSU funding + state acts
 - Large areas priority: forest companies/state
 - e.g. UPM Kymmene, Tornator: Haarikko-Saarijärvi, municipalities, state: Lohikoski region,
 - Smaller areas: marketing programme (private landowners) focus on hot spots
- Land use planning
 - Overall plan of the special needs of the ecological zones & connectivity to the SW-Russia GAP sites
- Propagation of continuous cover forestry
- Habitat restoration projects
 - Focus on forest-wetland-stream-lake –mosaics, especially riparian corridors along channel networks

List of some key GB targets

- Gulf of Finland National Park + other eastern islands
- Mire/bog/morass areas
 - south from Salpausselkä I, incl. Konnunsuo
 - North from Salpausselkä II, incl. Eräjärvi-Kemppilä mire area
 - Tohmajoensuu-Rillinki
- Forest areas: Lohikoski State forest, Haarikko-Saarijärvi & other forest-wetland-stream/lake mosaics
- Border rivers: Vaalimaanjoki, Urpаланjoki, Vilajoki, Rakkolanjoki, Mustajoki, Vuoksi, Helisevänjoki, Hiitolanjoki, Suonpäänjoki
- Border lakes: Pukalusj., Nuijamaanj., Tyrjänj., Pyhäjärvi

Hannu Siitonen



K-M Vuori



Sposibo!



K-M Vuori



<http://biodiv.krc.karelia.ru>



K-M Vuori